

Solutions in Action – Innotec Supplies (UK) Limited

The challenge

Salisbury-based Innotec Supplies (UK) Limited, leading specialist in chemical cleaning products, recently moved to a new unit at Glenmore Business Park. The business had been running from a basic industrial unit at Castlegate Business Park for 6 years, but rapid growth had necessitated the relocation.

Keen to push the project forward, Spaceway's corporate image coupled with their detailed knowledge of fire and Building Regulations swung the deal for Innotec's directors, who chose Spaceway's proposal against some stiff competition.

Managing Director of Innotec, Melanie Murrell explains: "We needed to double our storage and office space and also felt that our corporate identity needed to be more professional.

"After finding the right property, we instructed Spaceway to construct offices and a reception area that would portray the image that we wanted."

Spaceway's approach

Dominic O'Brien, Spaceway Sales Director added: "Spaceway provided the best solution for the refit works. The move necessitated a fast track programme which incorporated all elements of their brief.

"We were able to create a modern spacious office environment, with room available for future expansion."



Jim Murrell, Sales & Marketing Director (left) pictured with Dominic O'Brien

Benefits delivered

"We now have premises that we are proud to invite customers to. The working environment for my staff is 100% better and that is reflected in the atmosphere of the office and the work produced."

Melanie Murrell
Managing Director
Innotec Supplies (UK) Limited

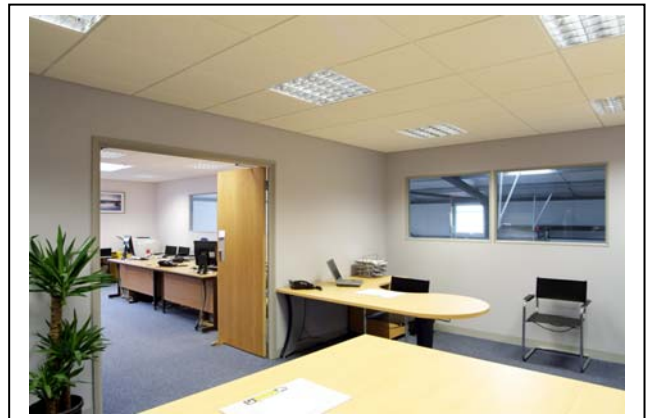


Solutions / products used

EXECUTIVE SUITES

OFFICES

The initial phase involved upgrading the existing mezzanine platform that led into the first floor open-plan offices and meeting room. The offices and meeting room were then divided using a special acoustic SMS Windsor range moveable wall to create an organic space.



RECEPTIONS

A small reception area was formed at the ground floor entrance and a lobby at the head of the staircase using Komfort 'Kameo 75' fire rated partitioning.

In addition, 600 x 600mm suspended ceiling tiles were also specified over the internal Kameo partitions. Cat II lighting was installed in the offices together with wall mounted electric heaters, fire exit signs and heat detection. Finally the offices were decorated with light grey Budget.com vinyl and carpeted using Gaskell Teviot in Saxe Blue.

FOR FURTHER INFORMATION

To discuss your space solution requirements, please telephone Sales 01794 835600 or send an email to Hsales@spaceway.co.uk